



An ISO 9001:2015
Certified Company

tecnicrafts®

Precisely Crafted. To Inspire Trust

- Guide Bushings
- Main Spindle Collets
- Sub - Spindle Collets
- Carbide Lined Collets
- Special Collets
- Bar Feed Collets



High Precision Collets & Guide Bushes

For Swiss Type CNC Automatic Lathes

Version 19.0.1

Machines - Maschinen - Machine

CITIZEN
Micro HumanTech

Cincom

Miyano

star

TORNOS

NEXTURN
SWISS TURN LEADER

TSUGAMI

Hanwha

DOOSAN

NOMURA

MAIER

INDEX
TRAUB

GILDEMEISTER



POLY GIM

MANURHIN KMX

HARDINGE

JF CNC
Machine
JINN FA

THE ULTIMATE MACHINING POWER
WOODWAY

Strohm

Petermann

André Bechler SA
Moutier

EWAG

ANCA

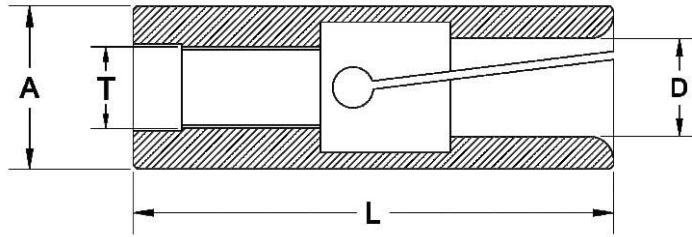
ROLLOMATIC

Tecnicrafts Industries

Manufacturers of
Hi-Precision Collets, Carbide Lined Guide Bushes
for Swiss type Automatic Lathes



CITIZEN-CINCOM, TSUGAMI, STAR, TORNOS, TORNOS-DECO, TORNOS-DELTA,
GILDEMEISTER, HARDINGE, HANWHA, INDEX, NEXTURN, MAIER,
MANURHIN-KMX, MIYANO, NOMURA, POLYGIM, TRAUB, BECHET, BECHLER,
PETERMAN, STROHM, GAUTHIER, GOODWAY, JIN-FA.

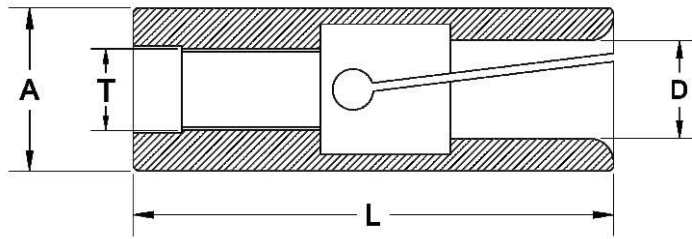


BARFEEDER COLLETS WITH INTERNAL THREAD

All Dimension are in mm - Unless Otherwise Specified

Part Nr.	Guiding Dia	Length	Thread	Capacity	
				Range	
	ØA	L	T	Ø Min	Ø Max
BF05/01	5.15	37	M4x0.7	1	3.5
BF7.5/02	7.5	40	M5x0.50	1	5.5
BF08/02	8	50	M4x0.70	1	6
BF8.5/01	8.5	30	M5x0.80	1	6
BF09/01	9	40	M6x0.75	1	7
BF9.5/02	9.5	45	M5x0.80 LH	1	7.5
BF9.5/03	9.5	45	M5x0.80	1	7.5
BF10/03	10	46	M6x1 LH	1	8
BF10/04	10	42	M6x0.75	1	8
BF10/06	10	50	M5x0.80 LH	1	8
BF10/08	10	50	M5x0.80	1	8
BF12/01	12	42	M7x0.75	1	10
BF12/04	12	40	M6x1 LH	1	10
BF12/06	12	42	M7x0.75	1	10
BF12/07	12	45	M5x0.80 LH	1	10
BF13/01	13	60	M8x1 LH	1	11
BF13/02	13	50	M5x0.80 LH	1	11
BF14/01	14	42	M8x1	3	12
BF14/04	14	42	M7x0.75	3	12
BF15/02	15	42	M8x1	3	13
BF15/03	15	60	M9x1 LH	3	13

* table to be continued

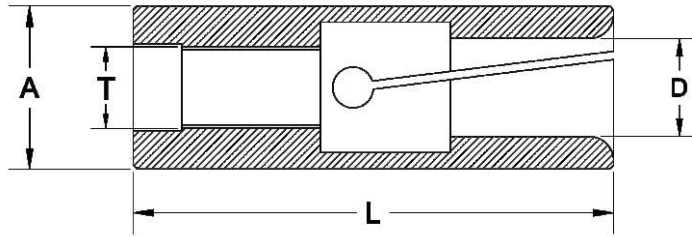


BARFEEDER COLLETS WITH INTERNAL THREAD

All Dimension are in mm - Unless Otherwise Specified

Part Nr.	Guiding Dia	Length	Thread	Capacity	
				Range	
	ØA	L	T	Ø Min	Ø Max
BF15/04	15	60	M10x1 LH	3	13
BF15/07	15	40	M5x0.50	3	13
BF15/09	15	73	M10x1 LH	3	13
BF15/11	15	60	M10x1	3	13
BF15/12	15	60	M8x1	3	13
BF15/14	15	85	M12x1 LH	3	13
BF15/15	15	50	M9x1 LH	3	13
BF15/16	15	16	M8x1 LH	3	13
BF16/01	16	73	M10x1 LH	3	14
BF16/04	16	58	M9x1 LH	3	14
BF16/06	16	42	M8x1	12	14
BF18/03	18	42	M9x1 LH	6	16
BF18/04	18	60	M9x1 LH	13	16
BF18/05	18	59	M10x1 LH	13	16
BF18/06	18	59	M10x1	13	16
BF19/01	19	59	M10x1	13	17
BF19/06	19	60	M9x1 LH	13	17
BF19/08	19	40	M8x1	12	17
BF19/09	19	50	M5x0.80 LH	13	17
BF20/03	20	59	M10x1	4	17
BF20/04	20	60	M10x1 LH	13	17

* table to be continued

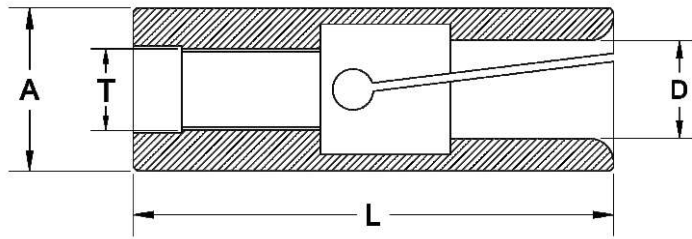


BARFEEDER COLLETS WITH INTERNAL THREAD

All Dimension are in mm - Unless Otherwise Specified

Part Nr.	Guiding Dia	Length	Thread	Capacity	
				Range	
	ØA	L	T	Ø Min	Ø Max
BF20/07	20	60	M10x1	13	17
BF20/08	20	59	M9x1 LH	13	17
BF20/09	20	42	M10x1	8	17
BF20/10	20	59	M9x1	13	17
BF22/01	22	59	M10x1	17	19
BF22/04	22	59	M9X1LH	17	19
BF23/04	23	59	M10x1	17	20
BF23/05	23	60	M9x1 LH	17	20
BF24/01	24	60	M9x1 LH	17	21
BF25/06	25	59	M10x1	17	22
BF25/07	25	59	M10x1 LH	17	22
BF25/08	25	60	M9x1 LH	17	22
BF25/09	25	60	M17x1	13	22
BF26.5/01	26.5	65	M17x1	15	23
BF27/01	27	65	M10x1 LH	15	24
BF27/02	27	65	M10x1	15	24
BF27/03	27	59	M9x1 LH	15	24
BF29/01	29	65	M18x1.5 LH	17	26
BF30/01	30	65	M10x1	24	27
BF30/03	30	65	M18x1.5	17	27
BF30/04	30	65	M18x1.5 LH	17	27

* table to be continued

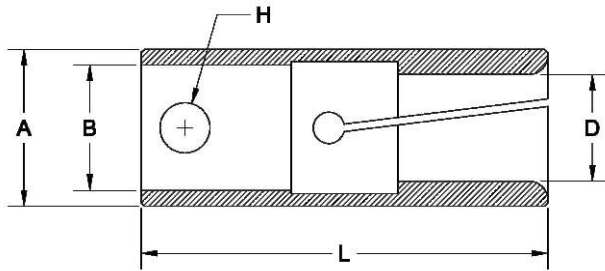


BARFEEDER COLLETS WITH INTERNAL THREAD

All Dimension are in mm - Unless Otherwise Specified

Part Nr.	Guiding Dia	Length	Thread	Capacity	
				Range	
	ØA	L	T	Ø Min	Ø Max
BF30/05	30	65	M10x1 LH	17	27
BF32/01	32	70	M17x1 LH	19	29
BF32/02	32	80	M25x1.5 LH	19	29
BF32/04	32	80	M25x1.5	19	29
BF35/02	35	80	M25x1.5	29	32
BF35/04	35	80	M25x1.5 LH	29	32
BF36/01	36	100	M30x1.5	23	33
BF40/01	40	80	M25x1.5	32	37
BF42/02	42	90	M25x1.5 LH	29	39
BF42/04	42	80	M25x1.5 LH	32	39
BF42/05	42	90	M32x1.5 LH	29	39
BF42/08	42	80	M25x1.5	29	39
BF44/01	44	80	M25x1.5 LH	39	41
BF46/01	46	80	M25x1.5	37	43
BF46/02	46	80	M25x1.5 LH	41	43

Bar Feeder Collets



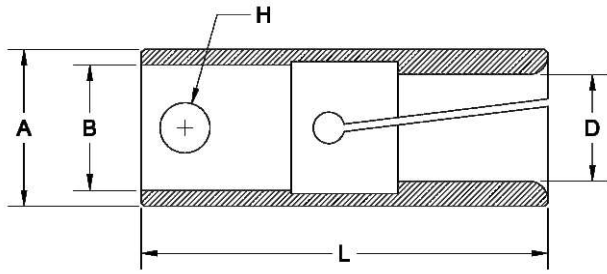
BARFEEDER COLLETS WITH PIN TYPE

All Dimension are in mm - Unless Otherwise Specified

Part Nr.	Guiding Dia	Length	Bore Dia	Hole Dia	Capacity	
					Range	
	ØA	L	ØB	ØH	Ø Min	Ø Max
BF05/02	5	28	3.5	1.5	1	3.5
BF07/04	7	37	5	3	1	5.5
BF07/07	7	28	3.5	1.5	1	5.5
BF10/02	10	40	7	4	1	8
BF12/05	12	40	8	4	1	10
BF15/01	15	55	10	6	3	13
BF15/06	15	40	11	6	3	13
BF15/08	15	50	11	6	3	13
BF15/10	15	55	7	2	3	13
BF16/03	16	65	11	6	3	14
BF16/05	16	40	11	6	3	14
BF17/01	17	55	7	2	13	15
BF17/02	17	45	11	6	5	15
BF18/01	18	40	11	6	3	16
BF19/02	19	57	10	6	3	17
BF19/04	19	57	10	2	3	17
BF19/07	19	40	11	6	13	17
BF20/05	20	56	10	6	13	17
BF20/06	20	65	14	8	3	17
BF22/02	22	65	14	8	18	19

* table to be continued

Bar Feeder Collets

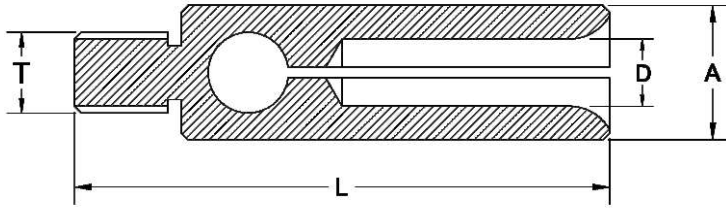


BARFEEDER COLLETS WITH PIN TYPE

All Dimension are in mm - Unless Otherwise Specified

Part Nr.	Guiding Dia	Length	Bore Dia	Hole Dia	Capacity	
					Range	
					Ø Min	Ø Max
	ØA	L	ØB	ØH	Ø Min	Ø Max
BF25/02	25	65	20	8	18	22
BF25/03	25	76	16	8	3	22
BF30/02	30	65	20	8	23	27
BF32/05	32	65	20	8	28	29
BF32/06	32	76	16	8	23	29
BF34/01	34	90	20	8	18	31
BF35/03	35	65	20	8	30	32

Bar Feeder - Collets



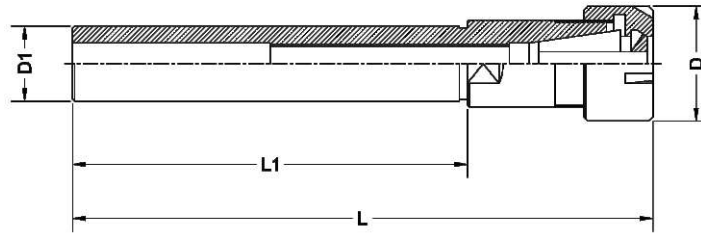
BARFEEDER COLLETS WITH EXTERNAL THREAD

All Dimension are in mm - Unless Otherwise Specified

Part Nr.	Guiding Dia	Length	Thread	Capacity	
				Range	
				Ø Min	Ø Max
BF5.5/01	5.5	31	M3	1	4
BF07/02	7	40	M6x1LH	1	5
BF08/01	8	40	M6x1	1	6
BF10/01	10	40	M6x1LH	1	8
BF11.5/01	11.5	40	M6x1	6	10
BF12/02	12	40	M6x1LH	8	10
BF15/13	15	40	M6x1 LH	3	13



- Range of Cylindrical ER Collet Shanks made from high quality special steels under controlled process
- The Shank is made to h6 standards for providing higher accuracy and tool life
- The Run-out is maintained within 0.005mm from shank dia to ERcavity taper
- Used for a wide range of tool holding application in Maching centers, Swiss type automatic lathes for drilling, milling application
- Wide Variety of shanks types - including Round, Round with flat in Single / Double ends offered in both metric and Inch Sizes
- These Cylindrical shanks are supplied with clamping nuts (without ER Collet)
- The shanks can be provided with back-up screw - upon request

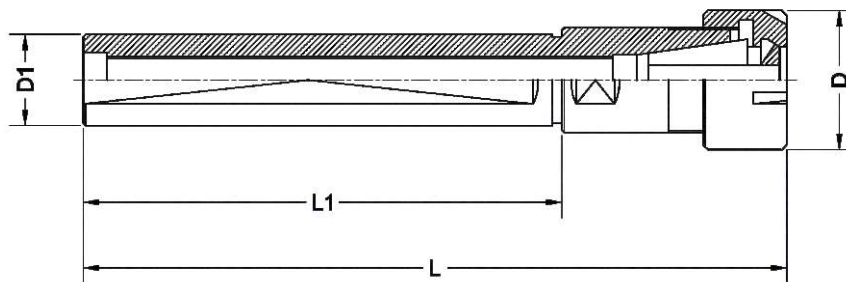


Single End - ER Cylindrical Holders with Mini Nut - Inch series

Part Nr.	ØD mm	ØD1 mm	L mm	L1 mm
ERS/SE-3/8" x 070 / ER 8 M	12	9.52	93.0	70
ERS/SE-1/2" x 140 / ER 11 M	16	12.7	169.5	140
ERS/SE-1/2" x 140 / ER 16 M	22	12.7	177.0	140
ERS/SE-5/8" x 150 / ER 11 M	16	15.87	172.5	150
ERS/SE-3/4" x 155 / ER 16 M	22	19.05	181.5	155
ERS/SE-3/4" x 100 / ER 16 M	35	19.05	147.0	100
ERS/SE-1" x 155 / ER 20 M	28	25.5	181.5	155

Single End - ER Cylindrical Holders with Mini Nut - Metric series

Part Nr.	ØD mm	ØD1 mm	L mm	L1 mm
ERS/SE 06 x 045 / ER 11 M	16	6	71.5	45
ERS/SE 07 x 045 / ER 11 M	16	7	71.5	45
ERS/SE 08 x 080 / ER 8 M	12	8	106.0	80
ERS/SE 08 x 056 / ER 11 M	16	8	82.5	56
ERS/SE 10 x 060 / ER 16 M	22	10	98.5	60
ERS/SE 12 x 080 / ER 8 M	12	12	97.0	80
ERS/SE 12 x 080 / ER 16 M	22	12	118.5	80
ERS/SE 15 x 100 / ER 20 M	28	15	142.5	100
ERS/SE 16 x 150 / ER 11 M	16	16	171.0	150
ERS/SE 16 x 100 / ER 20 M	28	16	142.5	100
ERS/SE 20 x 155 / ER 16 M	22	20	181.5	155
ERS/SE 25 x 155 / ER 20 M	28	25	181.5	155



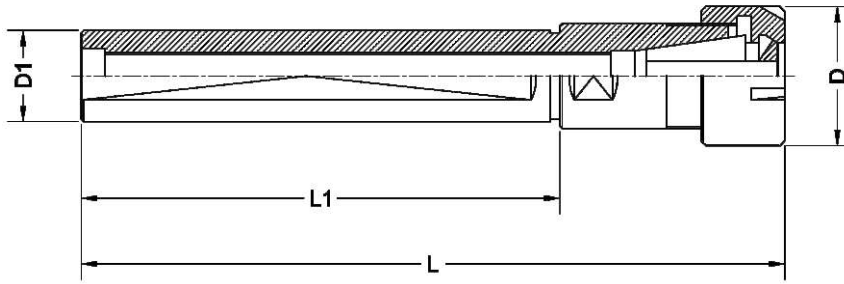
Single End - ER Cylindrical Holders - Flat with Mini Nut - Inch series

Part Nr.	ØD mm	ØD1 mm	L mm	L1 mm
ERS/SE-F- 5/8" x 043 / ER 8 MF	12	15.875	58	43
ERS/SE-F- 3/4" x 115 / ER 11 MF	16	19.05	135	115
ERS/SE-F- 3/4" x 050 / ER 16 MF	22	19.05	78	50
ERS/SE-F- 3/4" x 070 / ER 16 MF	22	19.05	98	70
ERS/SE-F- 3/4" x 120 / ER 16 MF	22	19.05	148	120
ERS/SE-F- 1" x 075 / ER 16 MF	22	25.4	103	75
ERS/SE-F- 1" x 100 / ER 16 MF	22	25.4	128	100
ERS/SE-F- 1" x 100 / ER 20 MF	28	25.4	128	100
ERS/SE-F- 1" x 140 / ER 20 MF	28	25.4	168	140

Single End - ER Cylindrical Holders - Flat with Mini Nut - Metric series

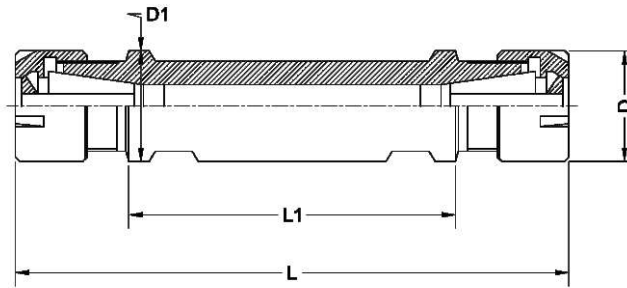
Part Nr.	ØD mm	ØD1 mm	L mm	L1 mm
ERS/SE-F- 16 x 038 / ER 11 MF	16	16	58	38
ERS/SE-F- 16 x 140 / ER 11 MF	16	16	160	140
ERS/SE-F- 20 x 050 / ER 16 MF	22	20	78	50
ERS/SE-F- 20 x 120 / ER 16 MF	22	20	148	120
ERS/SE-F- 20 x 140 / ER 16 MF	22	20	148	140
ERS/SE-F- 22 x 038 / ER 16 MF	22	22	66	38
ERS/SE-F- 22 x 070 / ER 16 MF	22	22	98	70
ERS/SE-F- 22 x 100 / ER 16 MF	22	22	128	100
ERS/SE-F- 22 x 080 / ER 20 MF	28	22	119	80
ERS/SE-F- 22 x 070 / ER 25 MF	35	22	117	70

* table to be continued



Single End - ER Cylindrical Holders - Flat with Mini Nut - Metric series

Part Nr.	ØD mm	ØD1 mm	L mm	L1 mm
ERS/SE-F- 25 x 065 / ER 16 MF	22	25	93	65
ERS/SE-F- 25 x 100 / ER 20 MF	28	25	128	100
ERS/SE-F- 25 x 154 / ER 20 MF	28	25	182	154
ERS/SE-F- 25 x 075 / ER 25 MF	35	25	122	75
ERS/SE-F- 25 x 145 / ER 25 MF	35	25	181	145
ERS/SE-F- 32 x 070 / ER 25 MF	35	32	100	70



Double End - ER Cylindrical Holders - Flat with Mini Nut - Inch series

Part Nr.	ØD mm	ØD1 mm	L mm	L1 mm
ERS/DE-F- 5/8" x 015 / ER 8 MF	12	15.875	45	15
ERS/DE-F- 5/8" x 025 / ER 8 MF	12	15.875	55	25
ERS/DE-F- 3/4" x 040 / ER 11 MF	16	19.05	80	40
ERS/DE-F- 3/4" x 070 / ER 11 MF	16	19.05	110	70
ERS/DE-F- 3/4" x 090 / ER 11 MF	16	19.05	130	90
ERS/DE-F- 3/4" x 055 / ER 16 MF	22	19.05	107	55
ERS/DE-F- 1" x 062 / ER 16 MF	22	25.4	118	62

Double End - ER Cylindrical Holders - Flat with Mini Nut - Metric series

Part Nr.	ØD mm	ØD1 mm	L mm	L1 mm
ERS/DE-F-16 x 050 / ER 11 MF	16	16	90	50
ERS/DE-F-20 x 030 / ER 11 MF	16	20	70	30
ERS/DE-F-20 x 050 / ER 11 MF	16	20	90	50
ERS/DE-F-20 x 055 / ER 16 MF	22	20	107	55
ERS/DE-F-22 x 055 / ER 16 MF	22	22	111	55
ERS/DE-F-22 x 075 / ER 16 MF	22	22	131	75
ERS/DE-F-25 x 062 / ER 16 MF	22	25	118	62
ERS/DE-F-32 x 055 / ER 20 MF	28	32	111	55
ERS/DE-F-32 x 075 / ER 20 MF	28	32	131	75